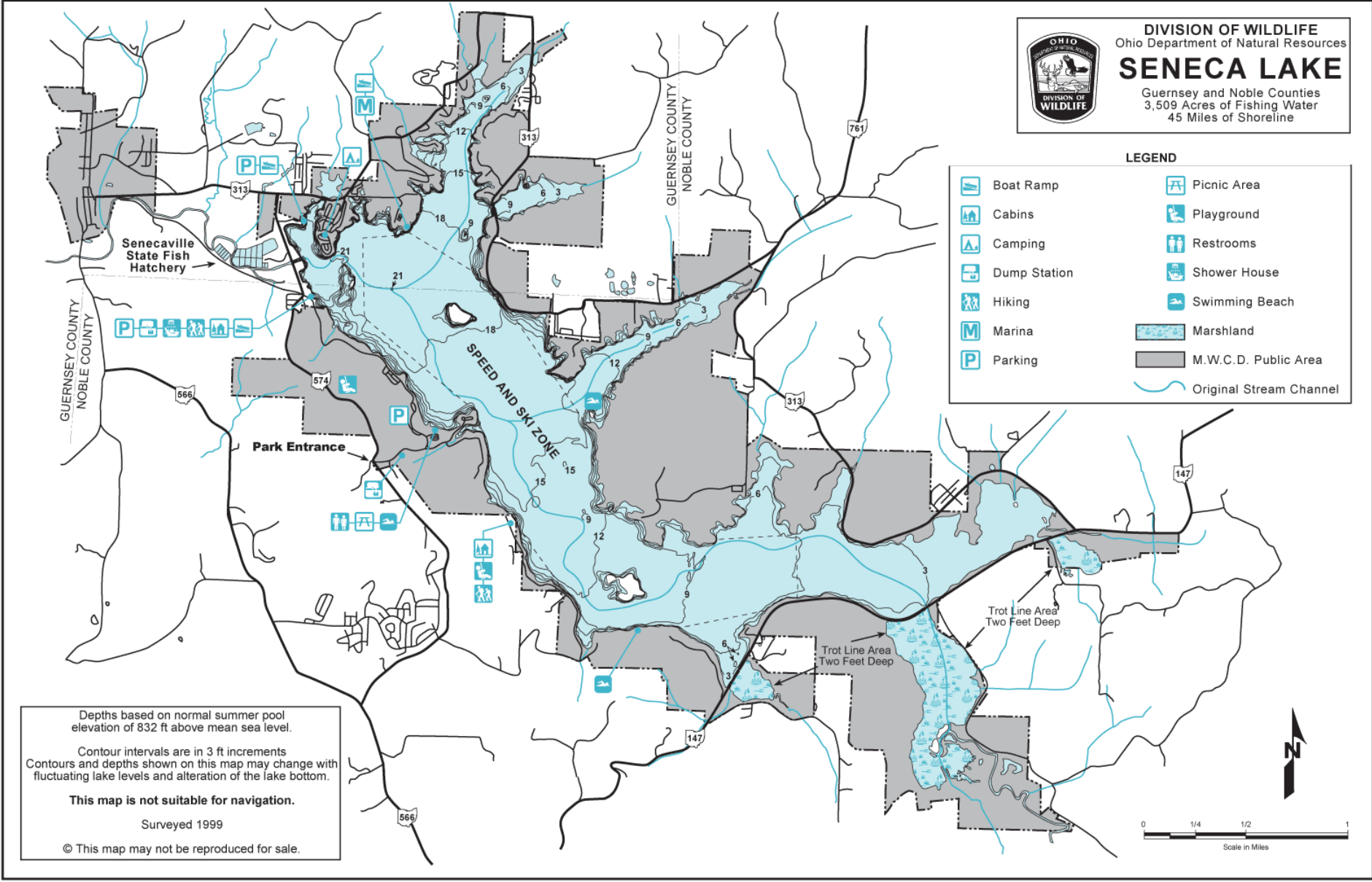




**DIVISION OF WILDLIFE**  
Ohio Department of Natural Resources  
**SENECA LAKE**  
Guernsey and Noble Counties  
3,509 Acres of Fishing Water  
45 Miles of Shoreline

**LEGEND**

- |              |                         |
|--------------|-------------------------|
| Boat Ramp    | Picnic Area             |
| Cabins       | Playground              |
| Camping      | Restrooms               |
| Dump Station | Shower House            |
| Hiking       | Swimming Beach          |
| Marina       | Marshland               |
| Parking      | M.W.C.D. Public Area    |
|              | Original Stream Channel |



Depths based on normal summer pool elevation of 832 ft above mean sea level.  
Contour intervals are in 3 ft increments  
Contours and depths shown on this map may change with fluctuating lake levels and alteration of the lake bottom.

**This map is not suitable for navigation.**

Surveyed 1999

© This map may not be reproduced for sale.

